



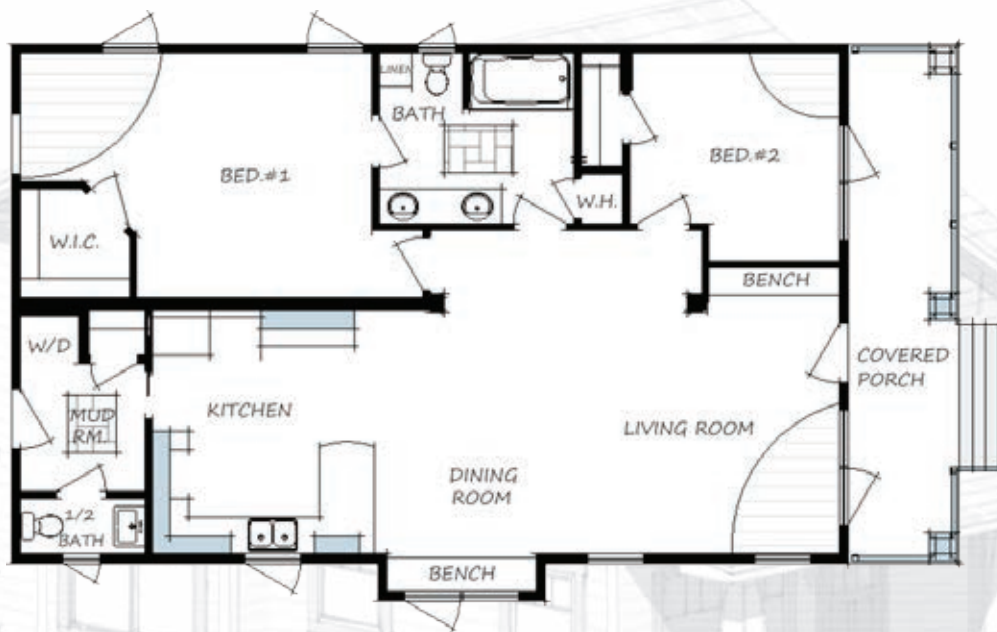
Introducing the **Countryview**, Maple Leaf Homes' newest design

1260 SQ. FT. + FRONT PORCH

Standard Features:

- R-31 Floor, R-50 Roof, R-22 Exterior Walls
- Upgrade Vinyl Siding with Eastern White Cedar Shingles
- Custom Windows complete with Black Outside Trim and White Inside Trim
- Custom Exterior Doors complete with Black Outside Trim and White Inside Trim
- Craftsman Smooth Interior Doors complete with Upgrade Hardware
- All Interior Finish is Oil Rubbed Bronze
- Flat Stock Interior Trim with Extended Window Sills
- Upgrade Lighting Package with LED Bulbs
- Custom Benches/ Storage at Front Entry and Dining Room
- Stainless Kitchen Appliances
- Custom Craftsman Exterior Pillars and Trim
- Hardwood Flooring Throughout Main Living Space and Bedrooms
- Ceramic Tile in Bathrooms and Rear Entry
- 8'-0" Ceiling
- Custom Roof Style with Walk-up Attic for Storage
- 6ft. Dome Top Tub
- Upgrade Plumbing Fixtures and Faucets
- Build to Ceiling Kitchen Cabinets with Soft-close Hinges and Slides





*We build **your** home, **your** way.*

Customization at its best, you have the option of choosing from our large selection of some of the best home designs in the industry. From traditional Mini-Homes to our newest Countryview design, the quality care and service of the Maple Leaf Team will exceed your expectations. Once you have chosen your design, our design consultant will assist you in customizing your new home to suit your personal style and taste. Anything from siding colour to kitchen cabinets will be tailored just for you! Start envisioning your dream home today! For more information on this or any other Maple Leaf Home, visit our website at mapleleafhomes.ca for a retailer in your area.

MAPLE LEAF  HOMES

655 Wilsey Rd., Fredericton NB, Canada E3B 7K3

Tel: 506-459-1335 • www.mapleleafhomes.ca